

# OWNER'S AND OPERATOR'S MANUAL



**5F • 6F • 8F • 10F**  
CSV'S WITH GASOLINE ENGINES



**HEAVY DUTY ROTOR**

# PATRIOT

*The New Performance Standard*

# 7 ILLUSTRATED PARTS LIST

The "Illus. #" refers to the numbered parts in the illustrations. Use the "Order #" and the "Description" when ordering. "Qty." refers to the total number of each part the machine is built with. Items without an "Illustration #" are available but not shown in the drawings.

Illus. #	Order #	Description	Qty.
1	825150005H	5 HP OHV TECUMSEH, 1" SHAFT	1
1	825150006H	6 HP OHV TECUMSEH, 1" SHAFT	1
1	825150008	8 HP TECUMSEH, 1" SHAFT	1
1	825150010	10 HP TECUMSEH, 1" SHAFT	1
2	301010195	ENGINE MOUNT/AXLE, 5, 6, 8 HP	1
2	300010580	ENGINE MOUNT/AXLE, 10 HP	1
3	302010215	GRINDER HOUSING, 5, 6, 8 & 10 HP	1
4	325000852	ROTOR, PLAIN w/ 1" BORE, 5 HP OHV	1
4	325000615	ROTOR, PLAIN w/ 1" BORE, 6, 8 & 10 HP	1
5	103009035	Y HAMMERS	6
6	204009045	HAMMER SHAFT	4
7	211009075	SPACER A (short, plain)	2
8	211009055	SPACER B (short w/ hole)	2
8B	265001895	ROLL PIN SLEEVE B	2
9	211009355	SPACER C (long w/ hole)	2
9C	265001905	ROLL PIN SLEEVE C	2
10	810009015	CHIPPER KNIFE	2
11	303010232	CENTER PLATE, 5 HP OHV	1
11	303010235	CENTER PLATE, 6, 8 & 10 HP	1
12	302010255	FAN HOUSING, 5 HP OHV	1
12	302010255	FAN HOUSING, 6, 8 & 10 HP	1
13	612010275	LEG, 5, 6, 8 & 10 HP	1
14	400010365	CHIPPER CONE CASTING	1
15	500050515A	SHREDDER HOPPER	1
16	1130103905A	DISCHARGE DEFLECTOR	1
17	400050365A	CHIPPER CONE	1
18	114050345	HOPPER GUARD	1
19	700060405	COLLECTION BAG, 24" x 36"	1
20	709040000	10" WHEEL, 5 HP	2
20	709040005	12" WHEEL, 6 & 8 HP	2
20	709040010	SEMI-PNEUMATIC TIRE, 10 HP	2
21	708000005	BEARING, 1" BORE & LOCK COLLAR	1
22	706520005	HEX HEAD CAP SCREW, 5/16-24 x 3/4"	4
23	705520005	HEX HEAD CAP SCREW, 5/16-18 x 3/4"	2
24	718520005	HEX HEAD CAP SCREW, 5/16-18 x 1-1/4"	2
25	705720005	BUTTON HEAD SOCKET CAP SCREW, 5/16-18 x 1/2"	7
26	706850005	FLAT HEAD SOCKET CAP SCREW, 5/16-24 x 5/8"	4
27	715520005	HEX HEAD CAP SCREW, 3/8-24 x 4-1/2"	1
28	716620005	LOCK WASHER, 3/8 SPLIT RING	1
29	705620005	LOCK WASHER, 5/16 SPLIT RING	4
30	705320005	SERRATED FLANGE NUT, 5/16-18	23
31	707320005L	HEX HEAD REVERSIBLE LOCK NUT, 1/4"-20	8

Illus. #	Order #	Description	Qty.
32	707720005	BUTTON HEAD CAP SCREW, 1/4-20 x 3/4"	8
33	710620005	1/4" SAE FLATWASHER	8
34	700020005	TRUSS HEAD SELF-TAPPING SCREW, #14 x 5/8	5
35	717520005	HEX HEAD CAP SCREW, 5/16-18 x 3-1/4"	2
36	710220005	LYNCH PIN	1
37	703200005	ROLL PIN, 3/16 x 3/4"	4
38	703100005	KEY, 1/4" SQUARE x 1-7/8"	1
39A	802022135	FLANGETTE, INNER	1
39B	702020005	FLANGETTE, OUTER	2
40	709920005	PUSH NUT, 5/8"	2
41	800070435	DANGER DECAL	3
42	800070445	CAUTION DECAL	1
43	800070450	OPEI CERTIFICATION DECAL	1
44	800070455	SERIAL NUMBER TAG (CALL FACTORY)	1
45	800070832	1/2" SIZE LIMIT DECAL, 5 HP	1
45	800070835	3/4" SIZE LIMIT DECAL, 6, & 8 HP	1
45	800070845	1" SIZE LIMIT DECAL, 10 HP	1

Convenient kits also available...

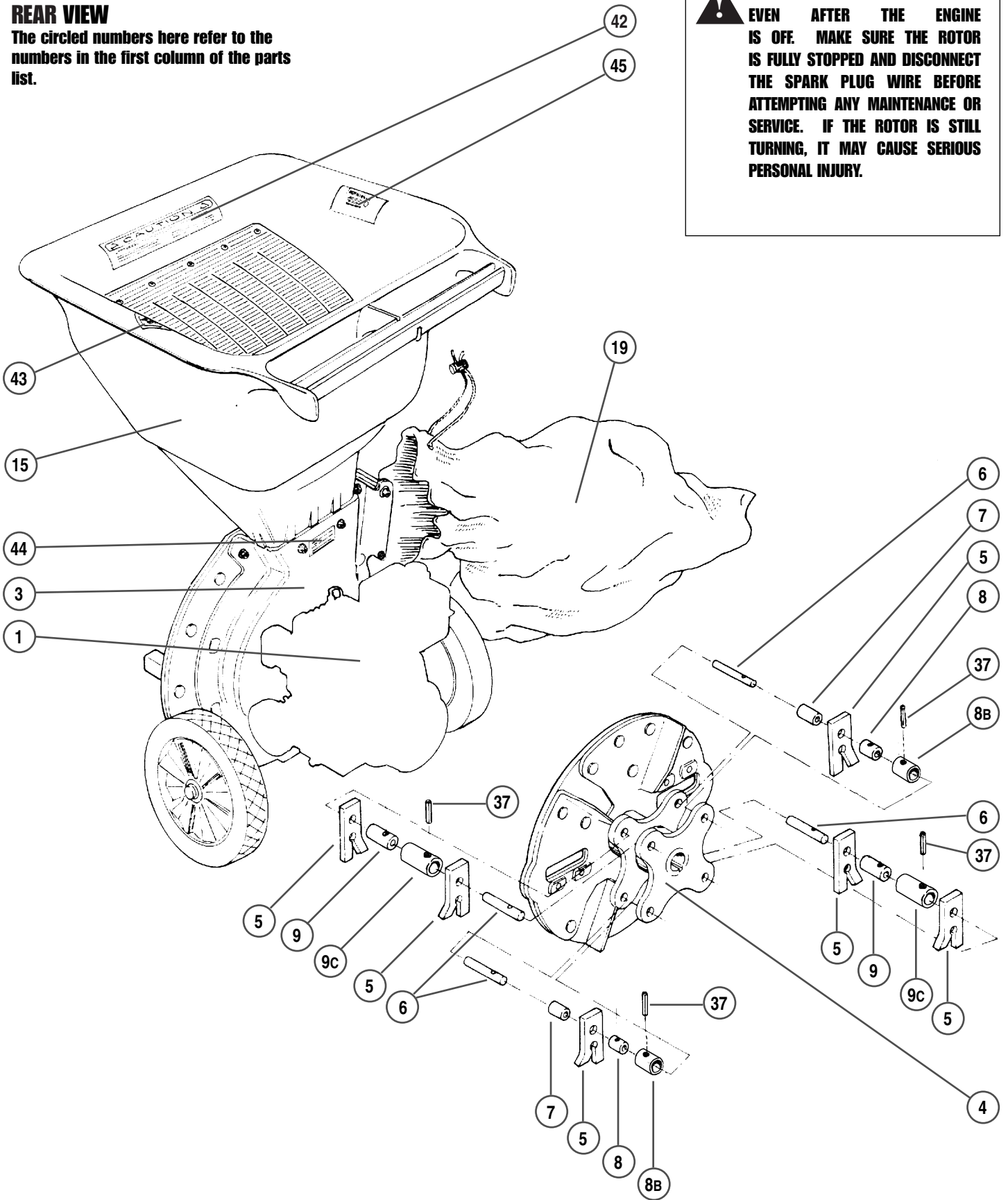
T990050045	VACUUM KIT (see page 8)	1
325000825 B	ROTOR, ASSEMBLED w/ HAMMERS, 5 HP	1
325000615 B	ROTOR, ASSEMBLED w/ HAMMERS, 6, 8 & 10 HP	1
991200005	BEARING KIT w/ LOCK	1
993090035	Y-HAMMER KIT w/ shafts, hardware	1
990000015	CHIPPER KNIFE KIT w/ hardware	1
990040395	DEFLECTOR KIT	1
990000455	HOPPERS HARDWARE KIT	1
990000005	HARDWARE KIT, complete	1
990060005	WHEELS KIT, 6, & 8 HP	1
990060010	SEMI-PNEUMATIC WHEEL KIT, 10 HP	1

703050005	ALLEN WRENCH, 3/16"	1
719050005	ALLEN WRENCH, 5/32"	1
920000005B	ASSEMBLY HARDWARE BAG, for assembly out of the box	1
700000005	SAFETY GOGGLES	1
990070005	WARNING/CAUTION DECALS KIT	1
800070425F	FORESTER BRAND DECAL	1
7090800610	HEAVY DUTY ROTOR DECAL, 10 HP	1
800070005F	FORESTER OPERATOR'S MANUAL, GAS MODELS	1
800070595F	FORESTER WARRANTY CARD (CALL 1-800-798-2447)	1

### REAR VIEW

The circled numbers here refer to the numbers in the first column of the parts list.

**CAUTION: THE ROTOR WILL COAST EVEN AFTER THE ENGINE IS OFF. MAKE SURE THE ROTOR IS FULLY STOPPED AND DISCONNECT THE SPARK PLUG WIRE BEFORE ATTEMPTING ANY MAINTENANCE OR SERVICE. IF THE ROTOR IS STILL TURNING, IT MAY CAUSE SERIOUS PERSONAL INJURY.**

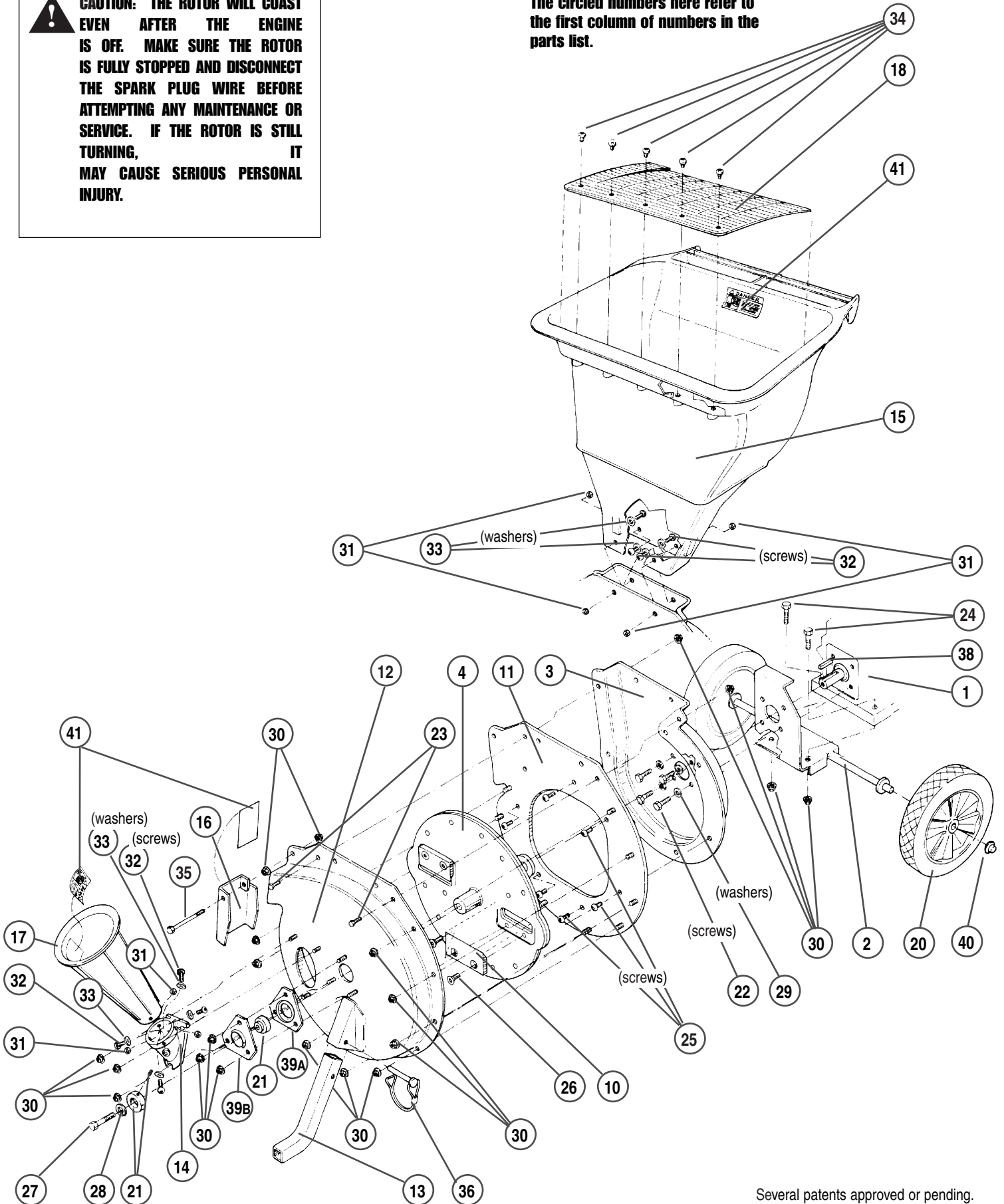




**CAUTION: THE ROTOR WILL COAST EVEN AFTER THE ENGINE IS OFF. MAKE SURE THE ROTOR IS FULLY STOPPED AND DISCONNECT THE SPARK PLUG WIRE BEFORE ATTEMPTING ANY MAINTENANCE OR SERVICE. IF THE ROTOR IS STILL TURNING, IT MAY CAUSE SERIOUS PERSONAL INJURY.**

### FRONT VIEW

The circled numbers here refer to the first column of numbers in the parts list.





**CAUTION: THE ROTOR WILL COAST EVEN AFTER THE ENGINE IS OFF. MAKE SURE THE ROTOR STOPS TURNING, THEN DISCONNECT THE PLUG WIRE FROM THE ENGINE BEFORE ATTEMPTING ANY MAINTENANCE OR CLEAN-OUT. IF THE ROTOR IS STILL TURNING, IT MAY CAUSE SERIOUS PERSONAL INJURY.**

