

Illustrated Parts-Breakdown

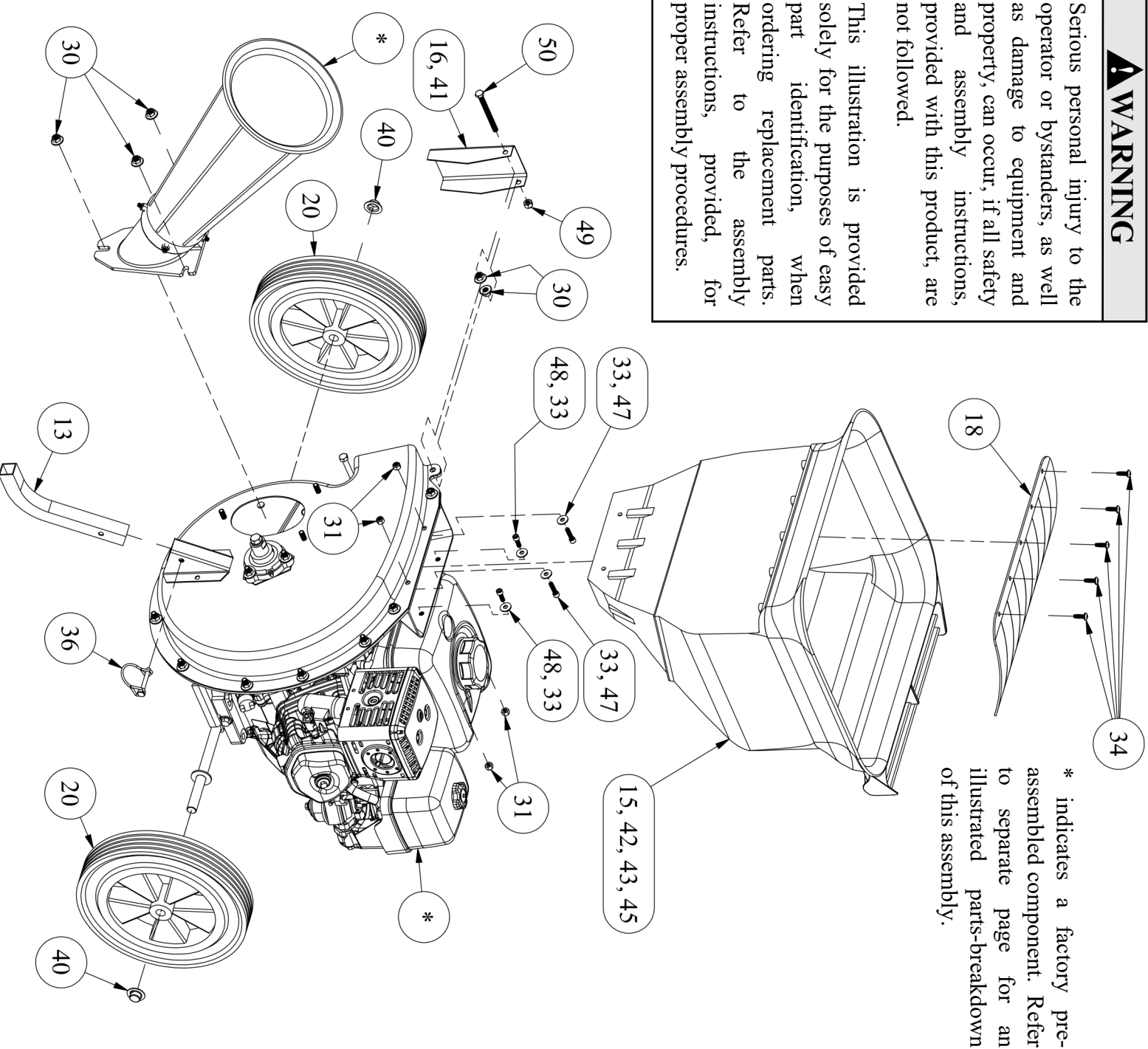
CSV-3090H Customer Assembly Components

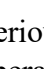
The components identified below are provided with a new chipper and must be assembled by the customer. Refer to the Parts List, provided on page 5, to see the part number and part description, that corresponds to the balloon numbers, found in this illustration.

⚠ WARNING

Serious personal injury to the operator or bystanders, as well as damage to equipment and property, can occur, if all safety and assembly instructions, provided with this product, are not followed.

This illustration is provided solely for the purposes of easy part identification, when ordering replacement parts. Refer to the assembly instructions, provided, for proper assembly procedures.



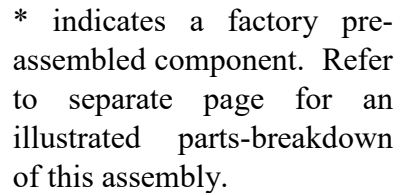


WARNING

Serious personal injury to the operator or bystanders, as well as damage to equipment and property, can occur, if all safety and assembly instructions, provided with this product, are not followed.

This illustration is provided solely for the purposes of easy part identification, when ordering replacement parts. Refer to the assembly instructions, provided, for proper assembly procedures.

This illustration is provided solely for the purposes of easy part identification, when ordering replacement parts. Refer to the assembly instructions, provided, for proper assembly procedures.



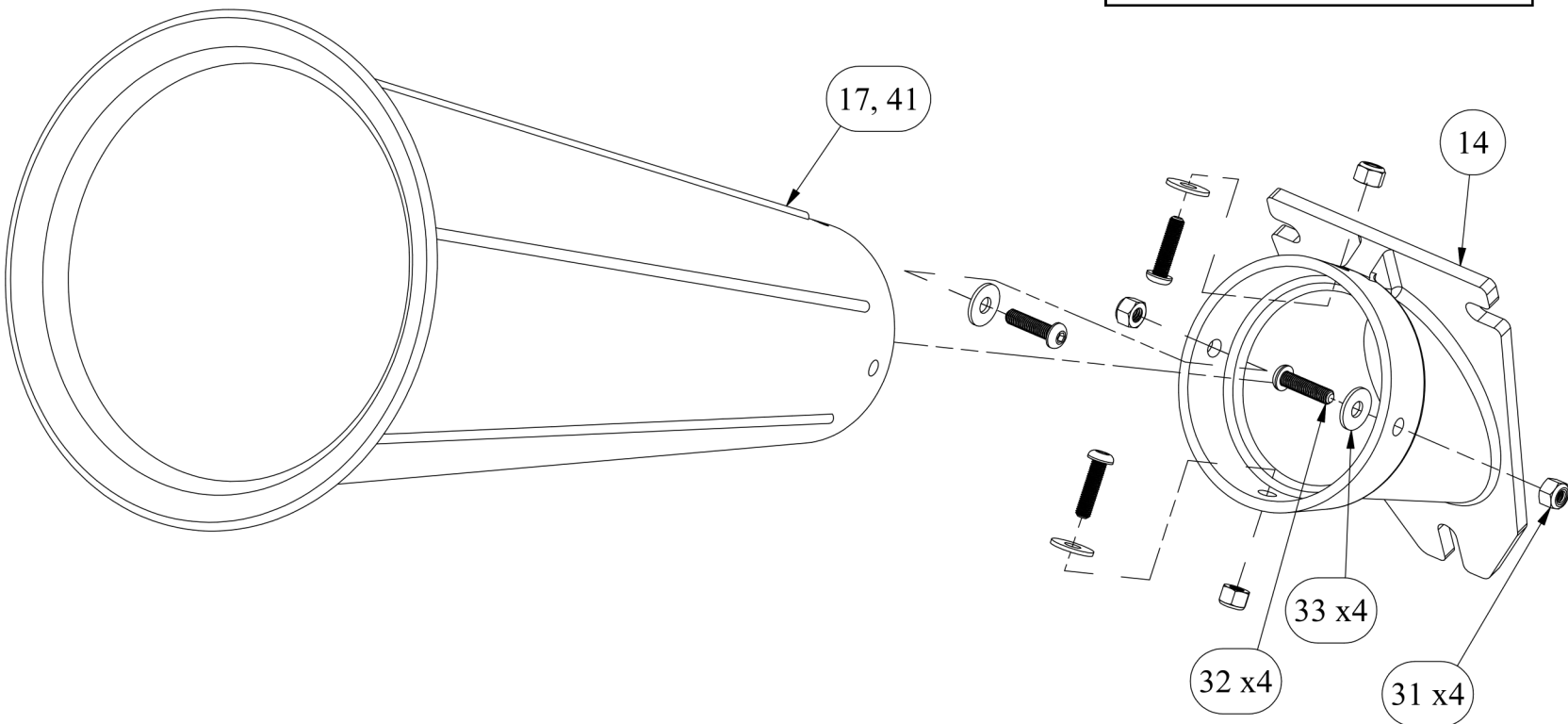
Illustrated Parts-Breakdown

Chipper-Cone Assembly

! WARNING

Serious personal injury to the operator or bystanders, as well as damage to equipment and property, can occur, if all safety and assembly instructions, provided with this product, are not followed.

This illustration is provided solely for the purposes of easy part identification, when ordering replacement parts. Refer to the assembly instructions, provided, for proper assembly procedures.



The components identified below are part of the factory pre-assembled chipper cone assembly. Refer to the Parts List, for your specific unit, provided on page 5, to see the part number and part description, that corresponds to the balloon numbers, found in this illustration.

! WARNING

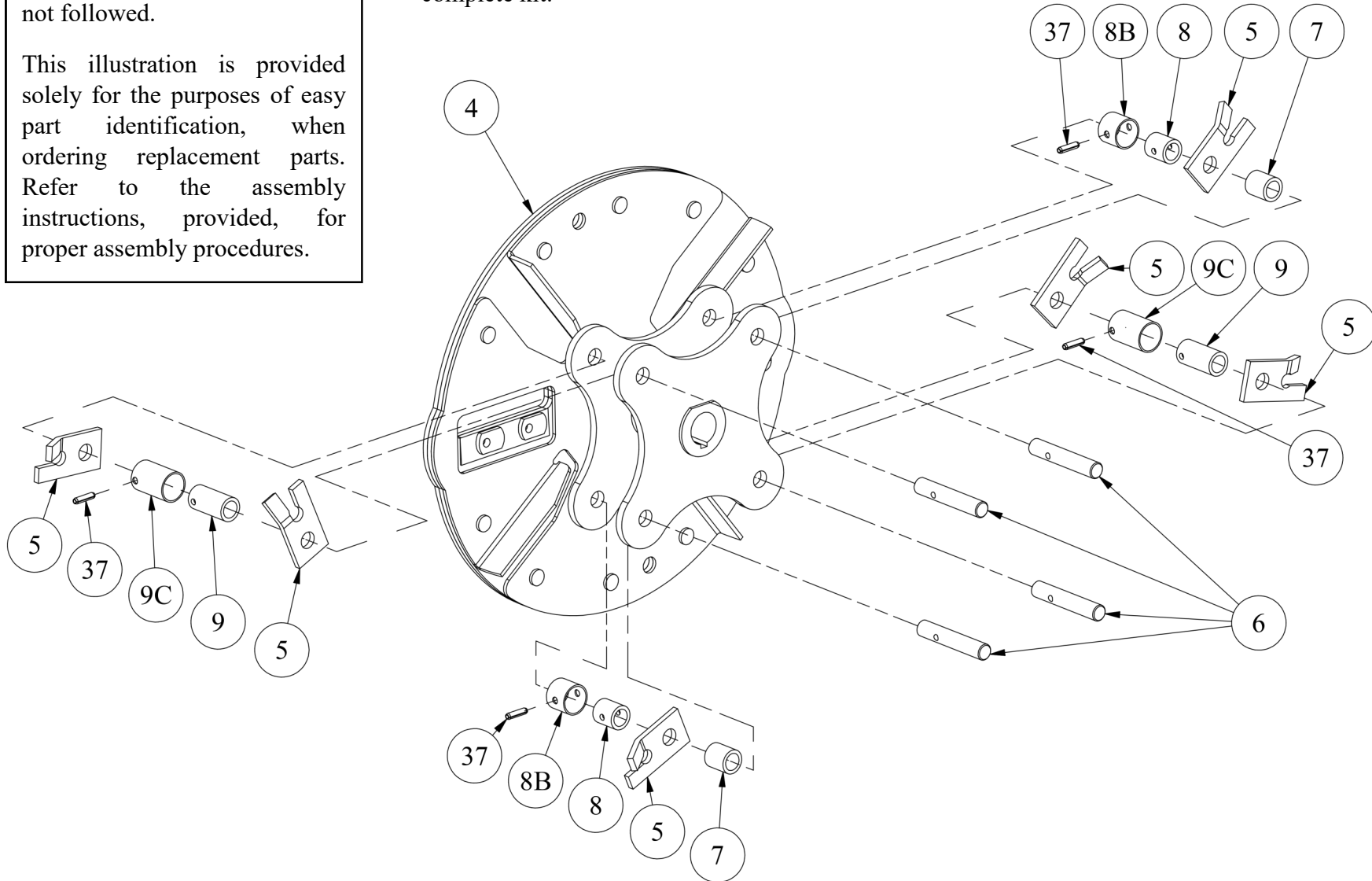
Serious personal injury to the operator or bystanders, as well as damage to equipment and property, can occur, if all safety and assembly instructions, provided with this product, are not followed.

This illustration is provided solely for the purposes of easy part identification, when ordering replacement parts. Refer to the assembly instructions, provided, for proper assembly procedures.

The components identified below are part of the factory pre-assembled rotor assembly. Refer to the Parts List, provided on page 5, to see the part number and part description, that corresponds to the balloon numbers, found in this illustration.

The complete rotor assembly, Balloon 4, comes factory pre-assembled, with all of the items depicted. *Note: It **does not** include the chipper-knives.*

The y-hammer components, everything depicted except Balloon 4, are only sold as a complete kit.



CSV-3090H Rotor Assembly
Illustrated Parts-Breakdown

Illustrated Parts-Breakdown

CSV-3090H Detailed Parts List

The "Ill. #" refers to the balloon numbers in the Illustrated Parts-Breakdown illustrations. Refer to both the "Part #" and "Description" when ordering. The "Qty" refers to the total number of each part, used in the assembly of the chipper shredder. Items without an "Ill. #" are available, but are not shown in the illustrations.

Ill. #	Part #	Description	Qty
1	888000034	Engine, CSV, 9 hp, Honda	1
2	300010690	Engine mount/axle	1
3	888000058	Grinder housing, 9 hp Honda	1
4	325002085	Rotor, tri-plate w/1" bore	1
5	103009035	Y-hammer	6
6	204009045	Y-hammer shaft, gas	4
7	211009075	Spacer A (short, plain)	2
8	211009055	Spacer B (short, w/hole)	2
8B	265001895	Roll pin sleeve B	2
9	211009355	Spacer C (long, w/hole)	2
9C	265001905	Roll pin sleeve C	2
10	810009015	Chipper knife	2
11	303010235	Center plate, 14"	1
12	302010255	Fan housing, 14"	1
13	888000179	Leg	1
14	888000085	Chipper cone casting, Pro Series	1
15	500050515	Shredder hopper, black	1
16	113010395	Discharge deflector	1
17	500050375	Chipper cone, black	1
18	114000345	Shredder hopper guard	1
-	700060405	Collection bag, std, 24" x 36"	1
20	709040005	Wheel, 12"	2
21	888000194	Bearing, 1" bore, greasable	1
22	888000031	HHCS, 5/16-24 x 1 1/2	4
23	705520005	HHCS, 5/16-18 x 3/4	2
24	751520005	HHCS, 5/16-18 x 1 3/4	2
25	705720005	BHSCS, 5/16-18 x 1/2	7
26	768800000	FHSCS, 5/16-24 x 1	4
27	888000078	HHCS, 7/16-20 x 5 1/2	1

Ill. #	Part #	Description	Qty
28	704620005	Lock washer, split ring, 7/16	1
29	705620005	Lock washer, split ring, 5/16	4
30	705320005	SFN, 5/16-18	23
31	888000042	NILN, 1/4-20	8
32	888000028	BHSCS, 1/4-20 x 1	4
33	710620005	Flat washer, USS, 1/4	8
34	700020005	TFSPPH, 14 x 3/4	5
35	717520005	HHCS, 5/16-18 x 3 1/4	1
36	710220005	Lynch pin	1
37	703200005	Roll pin, 3/16 x 3/4	4
38	703100005	Key, 1/4" sq. x 2"	1
39	888000193	Greasable bearing shield	1
40	709920005	Push nut, 5/8"	2
41	800070435V	Decal, CSV, danger, vertical	2
42	800070445	Decal, caution, 4" x 9.625"	1
43	800070435H	Decal, CSV, danger, horizontal	1
44	800070455	Decal, serial number	1
45	800070832	Decal, CSV, size limit, 1/2"	1
46	888000209	Engine spacer	2
47	888000136	SHCS, 1/4-20 x 3/4	2
48	888000137	SHCS, 1/4-20 x 1	2
49	888000055	NILN, 5/16-18	1
50	888000037	HHTB, 5/16-18 x 3 1/2	1
51	888000105	Flat washer, SAE, 5/16	2
-	888000230	Allen wrench, 3/16, 6" arm	1
-	719050005	Allen wrench, 5/32	1
-	700000005	Safety goggles	1